

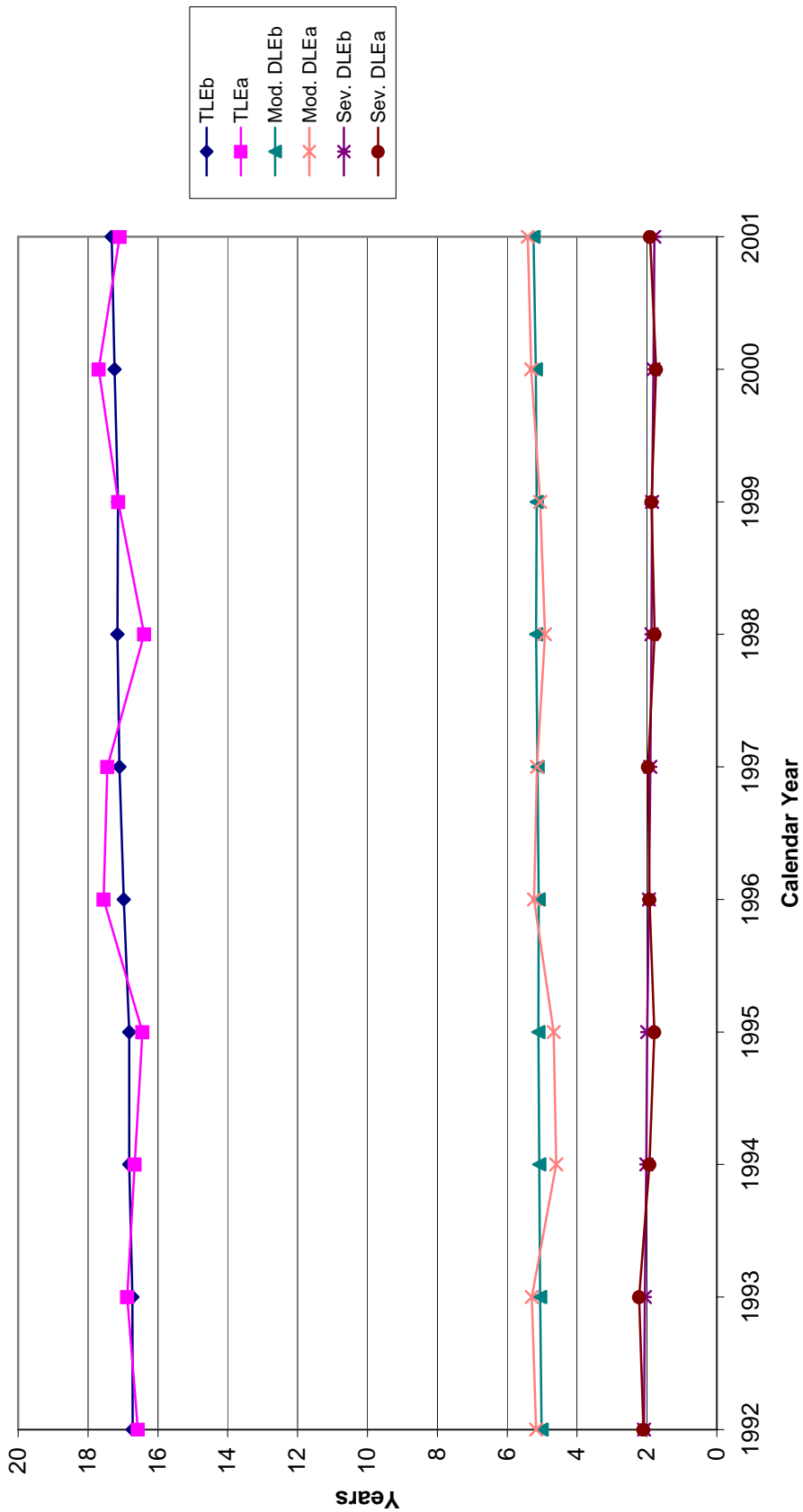
Table 1 Comparison of selected characteristics in 1992 and 2002

		1992	2002
Sample size		9,258	9,114
(percent of sample)			
Sex			
	Male	39.2%	41.2%
Race			
	White non-Hispanic	84.3%	81.0%
	Black non-Hispanic	9.1%	8.5%
	Hispanic	5.0%	7.0%
Avg. age		76.8	77.9
Education			
	0-11 years	46.3%	33.4%
	High School	29.2%	28.8%
	College or higher	24.6%	37.8%
Have 1+ chronic conditions		85.3%	91.8%
Disability status			
	Active health	48.1%	51.9%
	Moderately disabled	28.2%	27.6%
	Severely disabled	23.7%	20.6%

Notes:

1. Disability is defined as having difficulty or inability to perform any of the six IADLs or six ADLs. Active health is free of IADL or ADL disability. Moderate disability is disability with 1+ IADLs or 1~2 ADLs. Severe disability is disability with 3~6 ADLs.
2. Chronic conditions include hypertension, heart disease, stroke, cancer, diabetes, arthritis, mental disorder, osteoporosis and pulmonary disease.

Figure 1 Comparison of TLE and DLE (moderate and severe) estimates at age 65 from two approaches: a-year as dummy var., b-year as continuous var.



Notes: TLE is total number of years expected to live at age 65. Moderate DLE is expected years spent in moderate disability (i.e., disability with 1+ IADLs or 1~2 ADLs) between age 65 and death. Severe DLE is expected years spent in severe disability (i.e., disability with 3~6 ADLs) between age 65 and death.

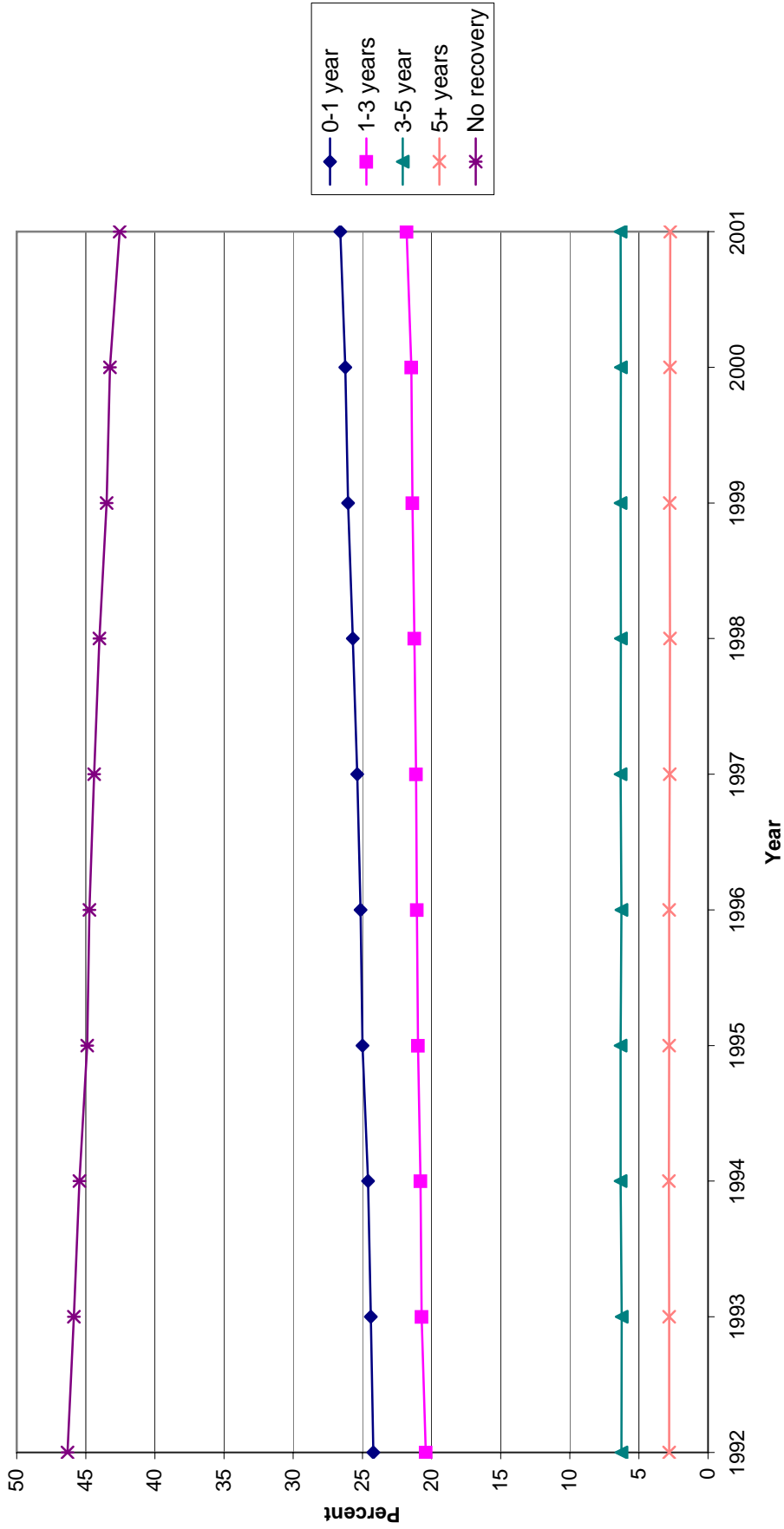
Table 2 Trends in indicators of compression of disability for the 65-year old in the U.S., 1992-2002

Baseline Condition	Measure	Both Sexes				Male				Female				
		1992	1995	1998	2001	1992	1995	1998	2001	1992	1995	1998	2001	
All	TLE	16.7	16.8	17.2	17.3	14.9	15.1	15.5	15.6	18.3	18.4	18.6	18.7	
	ALE	9.6	9.7	10.1	10.3	9.8	10.0	10.6	10.7	9.4	9.5	9.8	9.9	
	DLE													
	Total	7.1	7.1	7.0	7.0	5.1	5.1	5.0	4.9	8.8	8.9	8.8	8.9	
	Moderate	5.0	5.1	5.2	5.3	3.7	3.8	3.8	3.8	6.2	6.3	6.3	6.5	
	% having an episode	88.5	89.2	89.7	90.5	82.7	83.9	84.4	85.8	92.8	92.8	93.3	93.6	
	# of episodes	2.5	2.5	2.5	2.6	2.2	2.3	2.3	2.3	2.7	2.7	2.8	2.9	
	avg. duration	2.3	2.3	2.3	2.2	2.0	2.0	2.0	1.9	2.5	2.5	2.4	2.4	
	Severe	2.1	2.0	1.9	1.8	1.4	1.3	1.2	1.1	2.6	2.6	2.5	2.4	
	% having an episode	58.5	58.9	57.2	56.9	48.3	48.4	45.4	44.6	66.3	66.9	66.1	66.1	
	# of episodes	1.5	1.5	1.5	1.5	1.3	1.3	1.3	1.3	1.6	1.6	1.6	1.6	
	avg. duration	2.3	2.2	2.1	2.1	2.0	1.9	1.8	1.7	2.4	2.3	2.3	2.2	
	Age at disability onset													
	All	69.9	69.6	70.0	69.7	70.4	70.2	70.8	70.5	69.4	69.1	69.3	69.1	
	Moderate	70.1	69.9	70.2	70.0	70.7	70.5	71.0	70.8	69.7	69.5	69.6	69.4	
Severe	77.1	76.7	77.5	77.4	76.8	76.5	77.5	77.1	77.0	76.7	77.4	77.3		
Active	TLE	17.1	17.3	17.5	17.7	15.3	15.6	15.9	16.1	18.6	18.8	18.9	19.1	
	ALE	10.3	10.5	10.8	11.0	10.4	10.7	11.1	11.4	10.1	10.3	10.5	10.7	
	DLE													
	Total	6.8	6.8	6.8	6.7	4.9	4.8	4.8	4.7	8.4	8.5	8.4	8.5	
	Moderate	4.8	4.9	5.0	5.1	3.6	3.6	3.7	3.7	5.9	6.1	6.1	6.2	
	Severe	2.0	1.9	1.8	1.7	1.3	1.2	1.1	1.0	2.5	2.4	2.3	2.2	
	Age at disability onset													
	All	71.5	71.6	71.6	71.6	71.9	72.1	72.2	72.3	71.1	71.1	71.1	71.0	
	Moderate	71.6	71.6	71.6	71.7	72.0	72.1	72.2	72.3	71.2	71.2	71.1	71.1	
	Severe	79.1	79.3	79.6	79.9	78.6	79.0	79.2	79.5	79.0	79.3	79.7	79.9	
	Moderately Disabled	TLE	16.2	16.4	16.6	16.9	14.0	14.3	14.6	14.8	17.9	18.0	18.3	18.5
		ALE	8.1	8.4	8.6	9.0	8.0	8.4	8.7	9.2	8.0	8.3	8.5	8.7
		DLE												
		Total	8.1	8.0	8.0	7.9	6.0	5.9	5.8	5.7	9.9	9.7	9.7	9.8
		Moderate	6.0	6.0	6.1	6.1	4.6	4.6	4.6	4.6	7.2	7.2	7.3	7.4
Severe		2.1	2.0	1.9	1.8	1.5	1.3	1.2	1.1	2.7	2.5	2.5	2.4	
Age at disability onset														
All				NA				NA				NA		
Moderate				NA				NA				NA		
Severe		76.6	76.9	77.3	77.8	75.9	76.4	76.8	77.1	77.0	77.2	77.6	78.0	
Severely Disabled		TLE	13.8	14.0	14.4	14.6	10.8	11.4	11.7	11.8	16.2	16.2	16.3	16.5
		ALE	5.7	6.0	6.4	6.7	5.2	5.6	6.2	6.5	6.1	6.2	6.4	6.7
		DLE												
		Total	8.1	7.9	8.0	7.9	5.6	5.8	5.5	5.3	10.1	10.0	9.9	9.8
		Moderate	4.7	4.8	4.9	5.0	3.1	3.3	3.3	3.2	6.2	6.2	6.2	6.2
	Severe	3.4	3.2	3.1	2.9	2.6	2.5	2.2	2.1	3.9	3.8	3.7	3.6	
	Age at disability onset													

Note: Moderate disability is defined as having difficulty with or being unable to perform for health reasons at least one IADL or 1-2 ADLs. Severe disability is defined as having difficulty with or being unable to perform for health reasons at least three ADLs. For 65-year olds, TLE is defined as the estimated number of years remaining before death. It is the sum of ALE, the estimated time spent in active health, and DLE, the estimated time spent in disability.

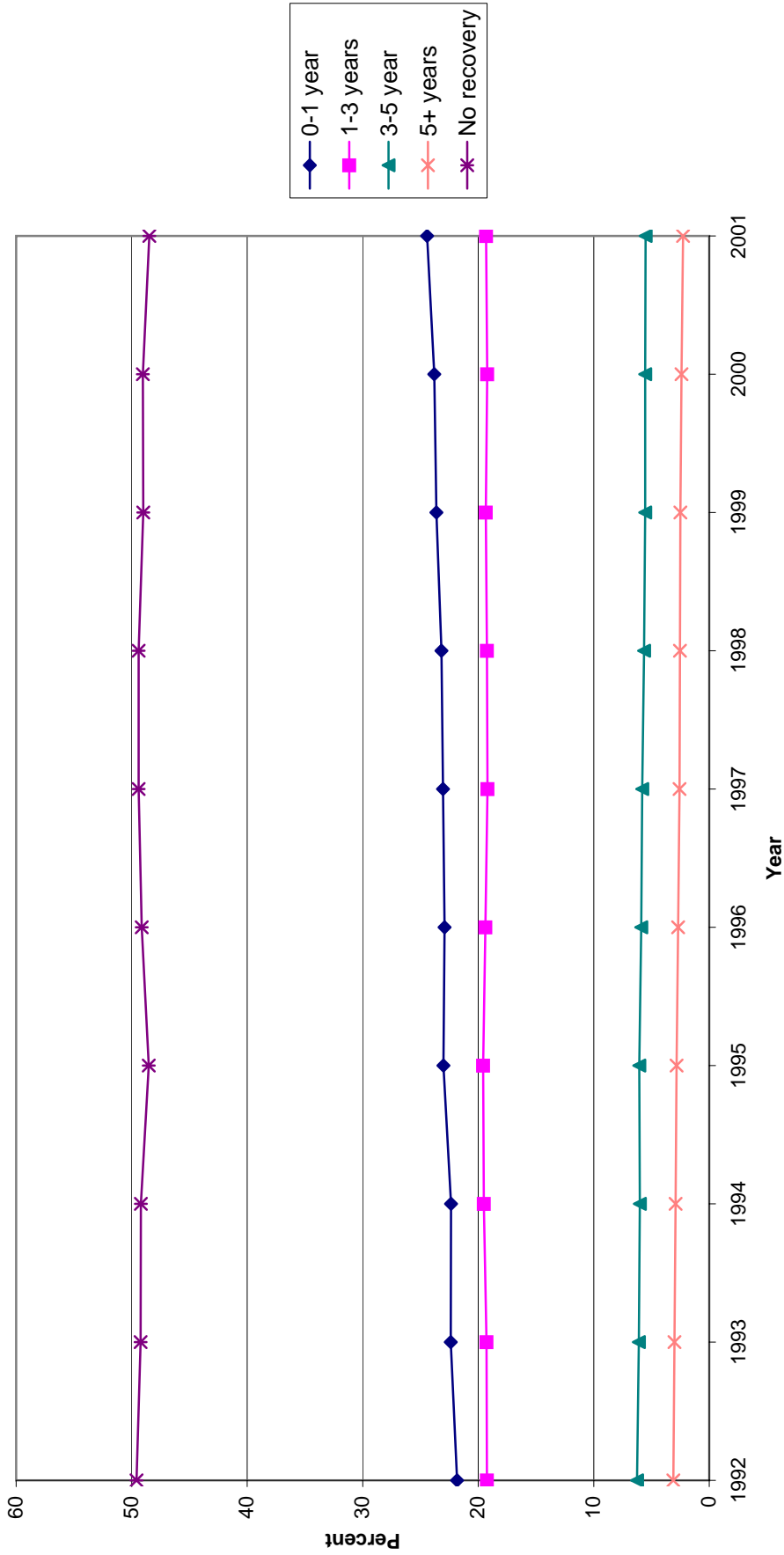
Sources: Medicare Current Beneficiary Survey (1992-2002)

Figure 2A Trends in probability of recovery from moderate disability for 65-year old Americans of average health, both sexes combined



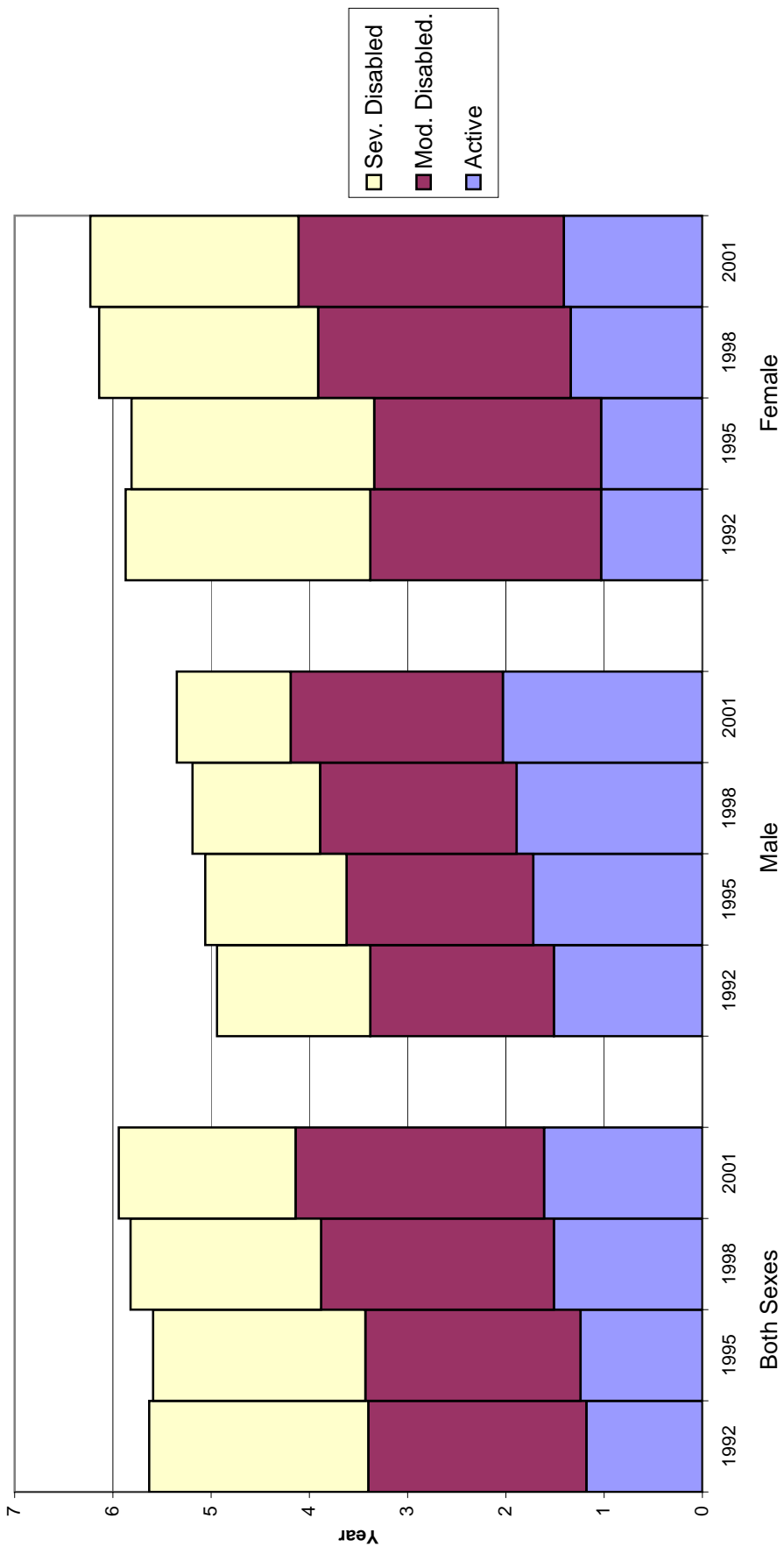
Notes: Moderate disability is defined as having difficulty or being unable to perform at least one IADL or 1-2 ADLs. Recovery is defined as transitioning into active health (i.e., free of IADL or ADL limitations).

Figure 2B Trends in probability of recovery from severe disability for 65-year old Americans of average health, both sexes combined



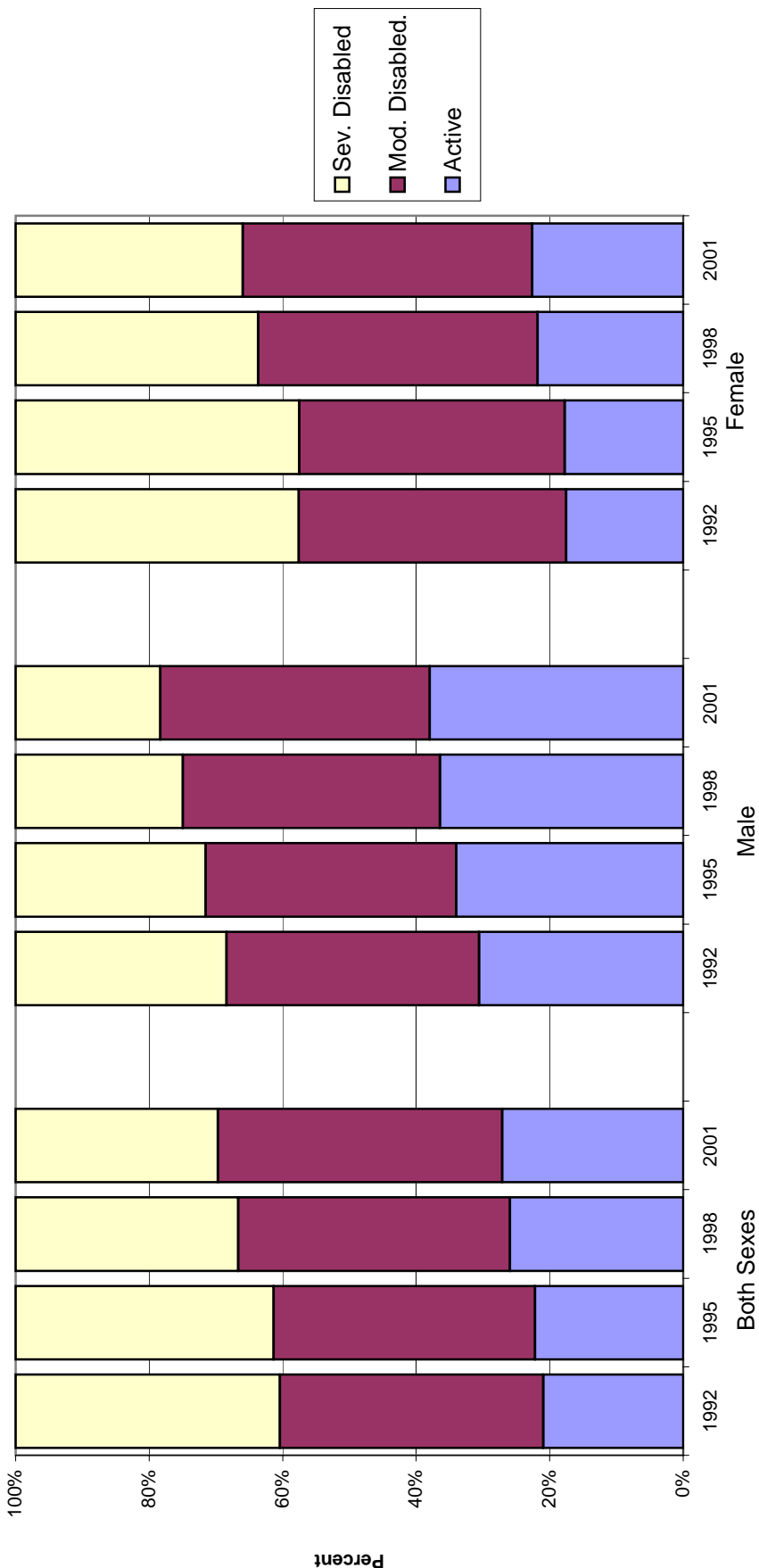
Notes: Severe disability is defined as having difficulty or being unable to perform at least three ADLs. Recovery is defined as transitioning into active health (i.e., free of IADL or ADL limitations), or moderate disability.

Figure 3A Trend in LE estimates (absolute) for 85-year old Americans of average health



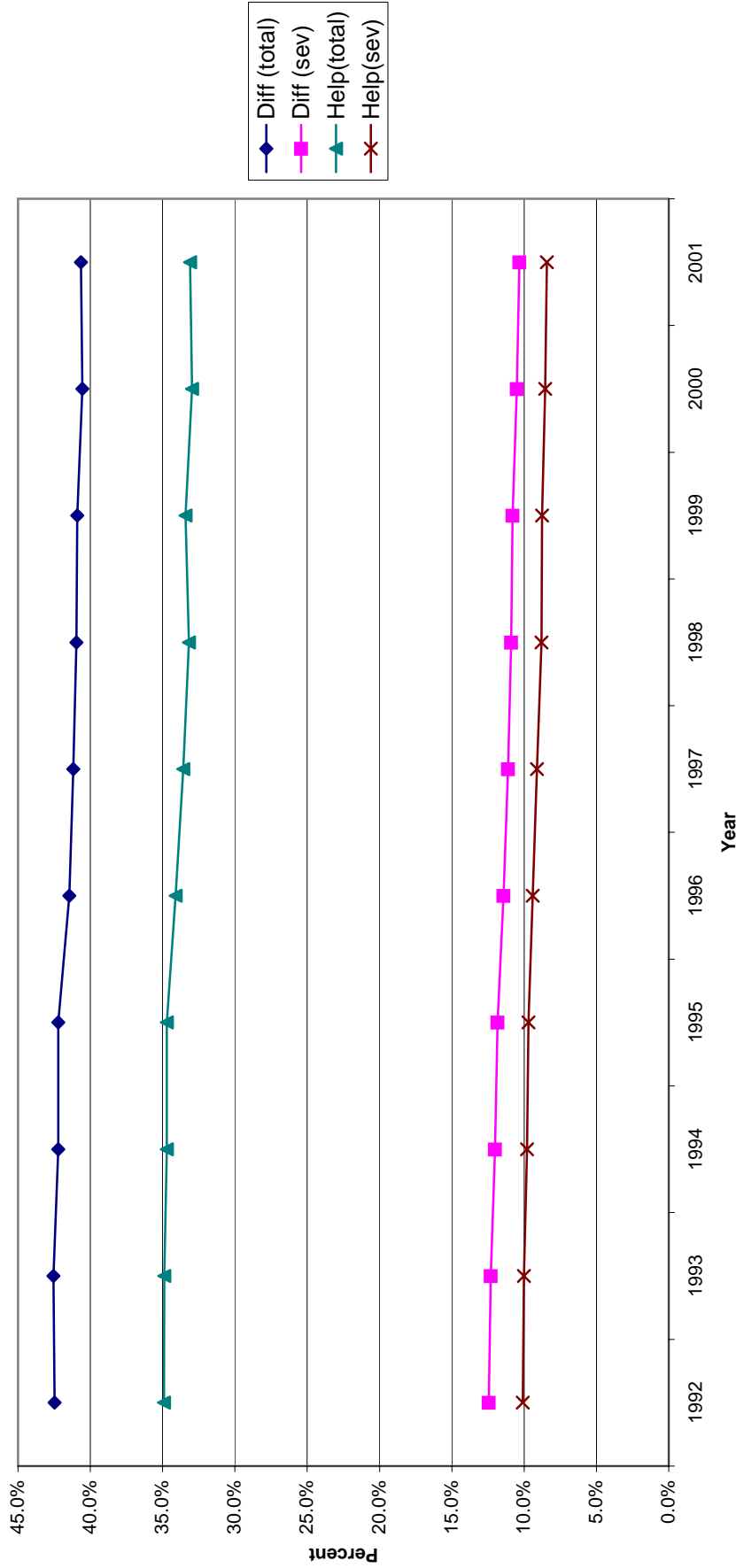
Notes: Active health is defined as no IADL or ADL limitations. Moderate disability is defined as having difficulty or being unable to perform at least one IADL or 1~2 ADLs. Severe disability is defined as having difficulty or being unable to perform at least three ADLs.

Figure 3B Trend in LE estimates (relative) for 85-year old Americans of average health



Notes: Active health is defined as no IADL or ADL limitations. Moderate disability is defined as having difficulty or being unable to perform at least one IADL or 1~2 ADLs. Severe disability is defined as having difficulty or being unable to perform at least three ADLs.

Figure 4 Changes in disabled (total and severe) DLE at age 65 as percent of total life expectancy



Notes: Estimates of total and severe DLE are based on two different definitions of disability. One is based on one's difficulty with or inability to perform at least one IADL or ADL only. The other is based on, in addition to one's difficulty or inability, receiving help, under supervision or using equipment. Total DLE is defined as expected years spent in either moderate or severe disability between age 65 and death; while severe DLE is expected years spent in severe disability only.